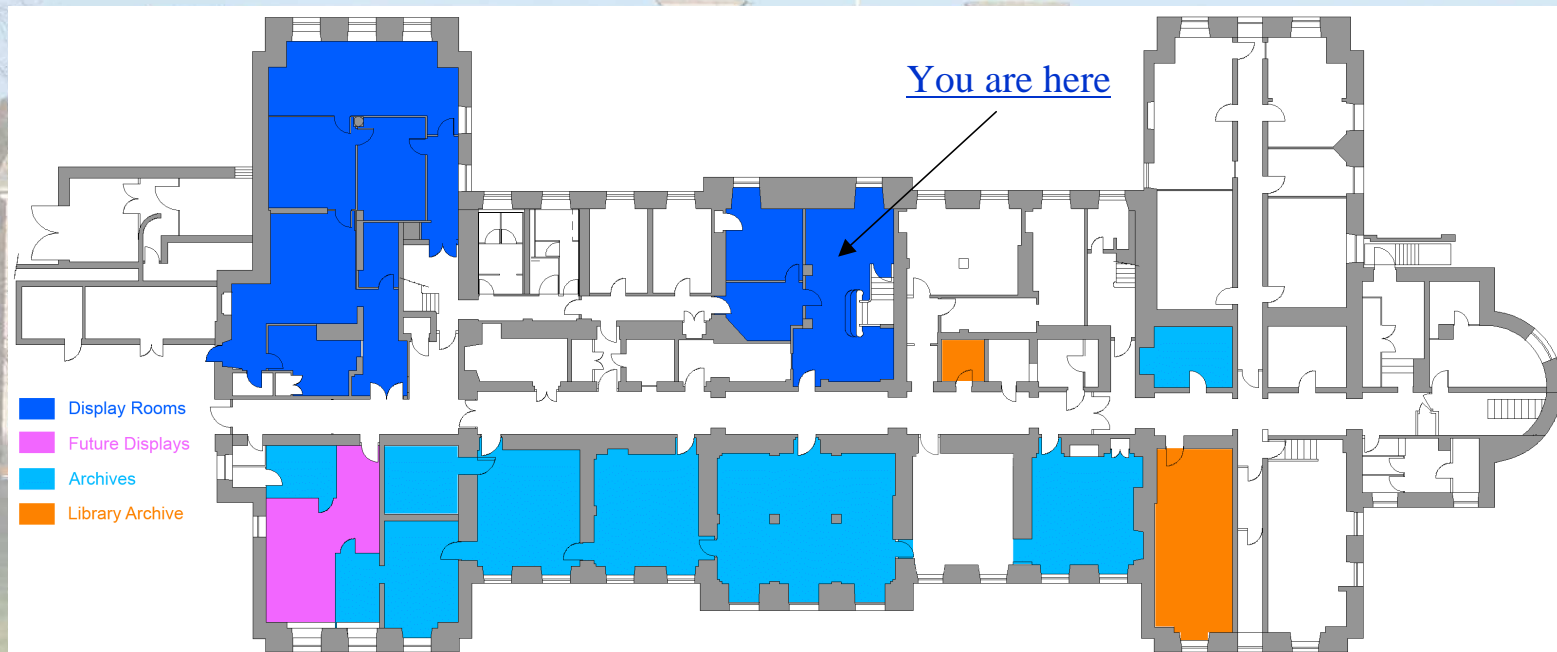


IBM Hursley Museum

The Hursley museum is located in several rooms on the lower ground floor of Hursley House



IBM Hursley Museum



IBM Hursley Museum

Home

The Museum

Search Museum

Hardware

Software

Hard Copy

Customer Engineering

Photographs

Video

Misc Items

Other Organisations

Donations

Contact Us

Cataloguing status: Almost all hardware and customer engineering items on display, about half of the software and most of the hard copy paper archive have been catalogued. Most video tapes catalogued, start has been made on photographic archive.

[Museum News](#)

[New Electronics Article](#)



IBM Hursley Museum

The museum at IBM Hursley Park exists to help preserve IBM's historical heritage. The museum contains artefacts from the Hursley Park location as well as hardware from the company's beginnings through to many of the products developed at Hursley over the years. Staff on-site can visit the museum at any time. Customer groups are often shown around the Museum during visits to the Executive Briefing Centre but due to its location in the IBM development laboratory the Museum is not open to the general public. However visits by organised groups can be, and are, arranged. Recent visitors have included several branches of the University of the Third Age (U3A), Hampshire Buildings Preservation Trust, the Computer Conservation Society and the National Museum of Computing (Bletchley Park). Applications for such visits should be made to uklabscomms@uk.ibm.com.

Hursley's Museum is located in several rooms on the lower ground floor of Hursley House, and there are also various displays in the Hursley House library which are refreshed from time to time. Currently, the special displays are: Hursley House history and Hursley technology developments. There is also a display area in the [Bristol Office](#), where Cloudant staff are based.

New Look Museum Room

In December 2015 the museum received some glass display cabinets with LED lighting. The Hursley Products room has been completely revamped and some additional artefacts put on display.

Panoramic Tour of The Museum

There are now 360 degree panoramic views of most of the museum here. The images are also available on Google maps, where they are hosted.

Space Probe

Our latest acquisition is the IBM Imp1 space probe. [Click here](#) for more information.



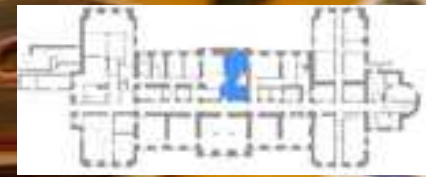
Copyright 2012-2014 - Peter Short

Produced by Peter Short

The museum's web site home page

Museum Web Site: <http://hursley.slx-online.biz>

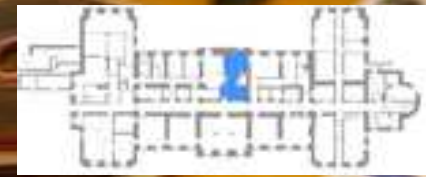
IBM Hursley Museum



[Hursley Products / IBM History / Space Probe](#)

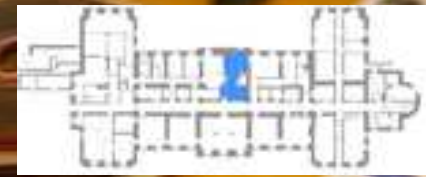
Museum Web Site: <http://hursley.slx-online.biz>

IBM Hursley Museum



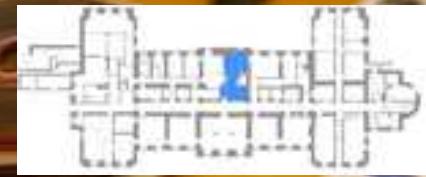
Monitors & S/360

IBM Hursley Museum



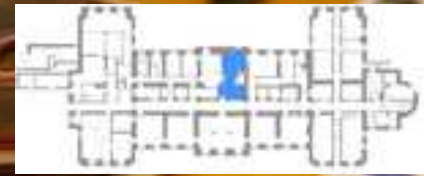
Hursley-Developed Products – Disk Drives

IBM Hursley Museum



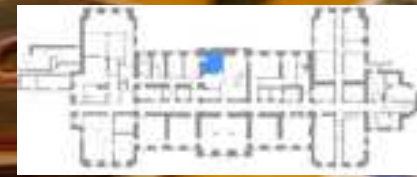
Disk Drives, Schools Computer, 3278

IBM Hursley Museum



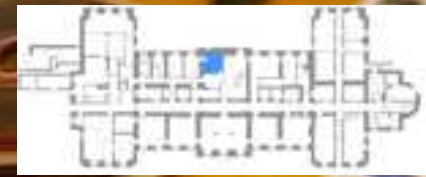
Dictating Equipment, IBM Pad, Wearable, Car Insurance Driving Monitor

IBM Hursley Museum



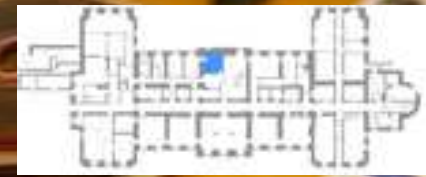
Early Years – Card Punches, Collator, Computing Scales

IBM Hursley Museum



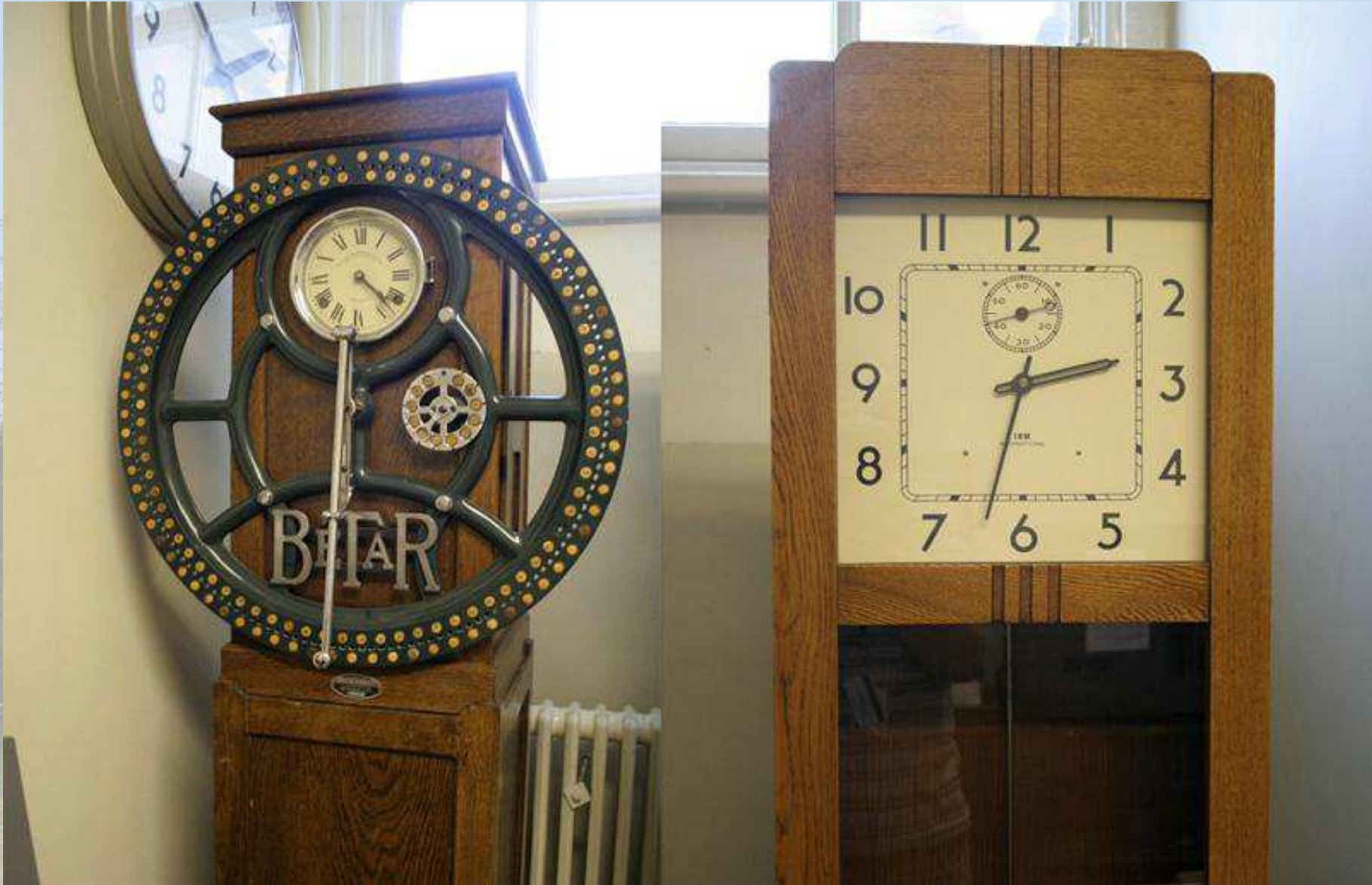
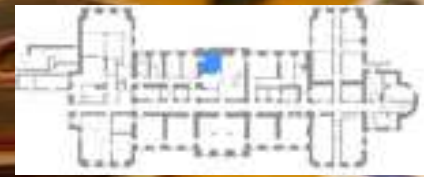
Early Years – Time Recorders, Clocks, Card Sorter, Typewriters

IBM Hursley Museum



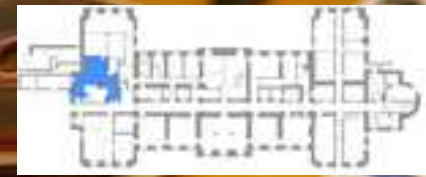
Computing Scales, Time Recorder

IBM Hursley Museum



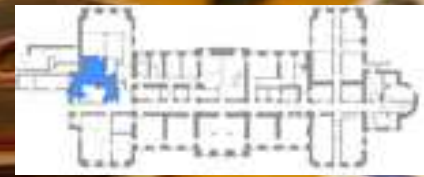
Time Recorder, Clock

IBM Hursley Museum



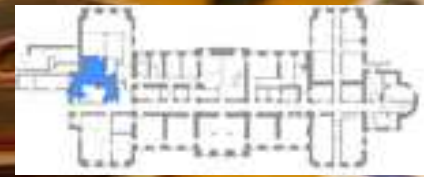
Selectric Composer, Magnetic Card Typewriters

IBM Hursley Museum



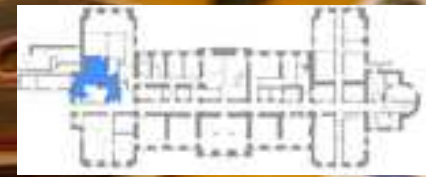
DisplayWriter

IBM Hursley Museum



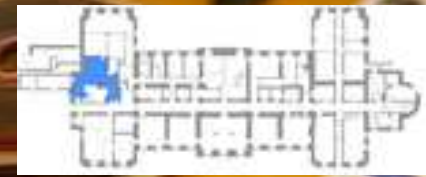
[Point of Sale Terminal](#)

IBM Hursley Museum



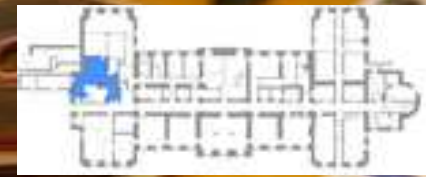
Point of Sale Terminals

IBM Hursley Museum



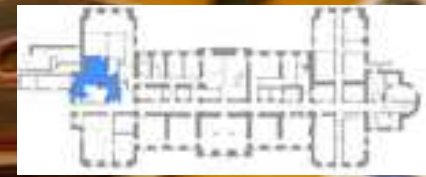
Typewriters, Wheelwriters

IBM Hursley Museum



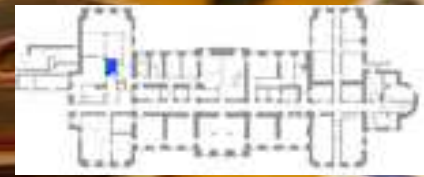
AS/400, Terminals, Token Ring

IBM Hursley Museum



[System/23](#)

IBM Hursley Museum



[RISC Computing](#)

Museum Web Site: <http://hursley.slx-online.biz>

IBM Hursley Museum



[IBM 705 Console](#)

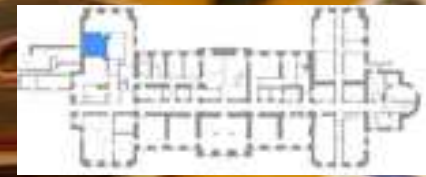
IBM Hursley Museum



[RAPC – 727 Tape Drive, 3350 Disk Drives, 024 Punch, 056 Verifier](#)

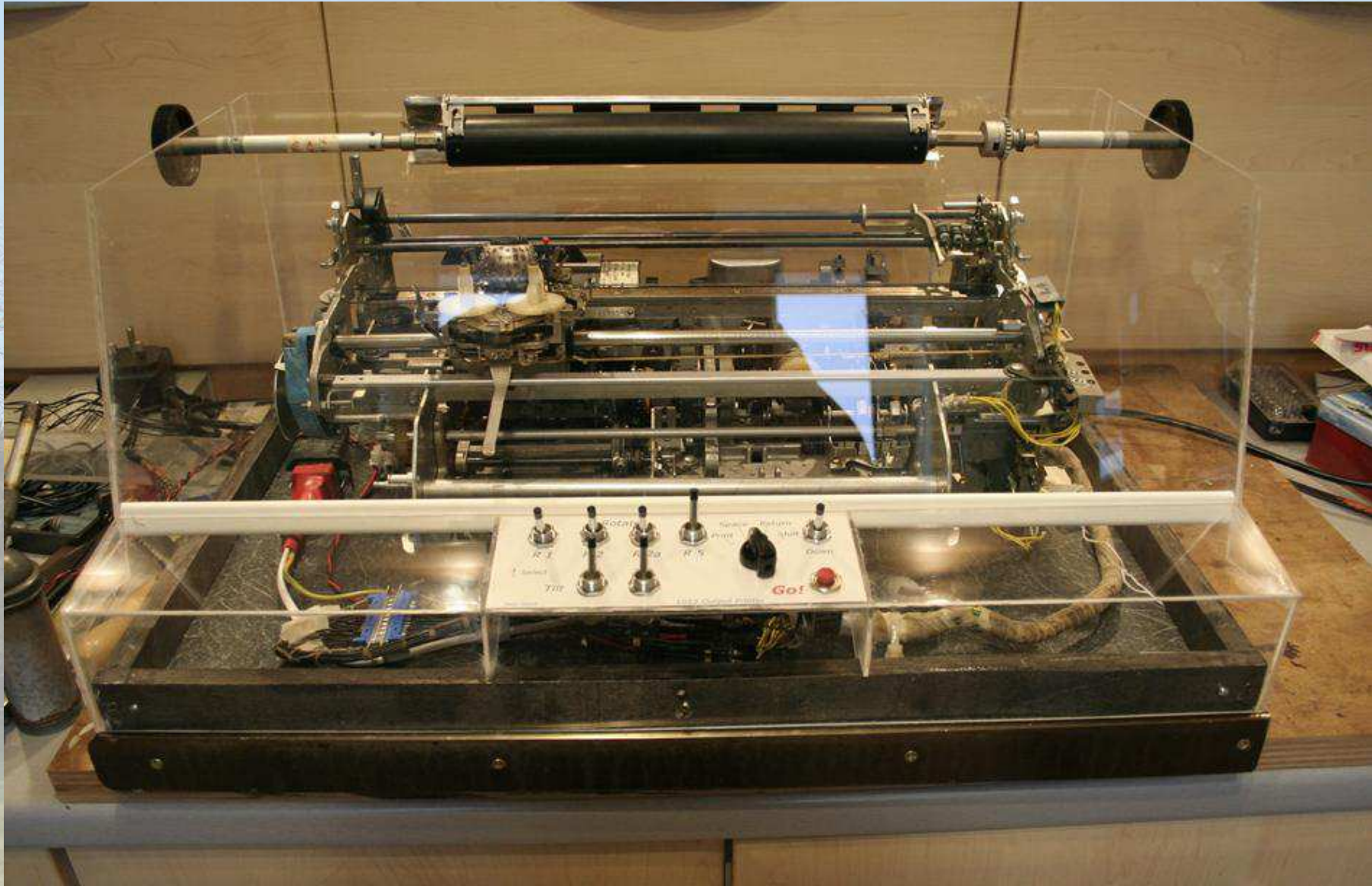
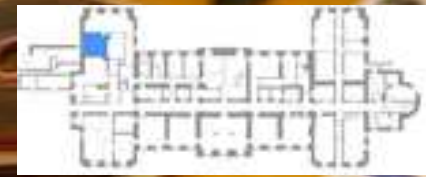
Museum Web Site: <http://hursley.slx-online.biz>

IBM Hursley Museum



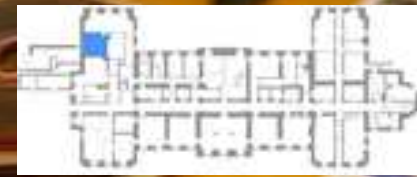
Customer Engineering

IBM Hursley Museum



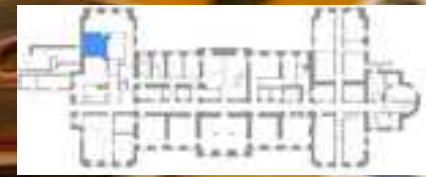
[1052 Console Typewriter \(System/360\)](#)

IBM Hursley Museum



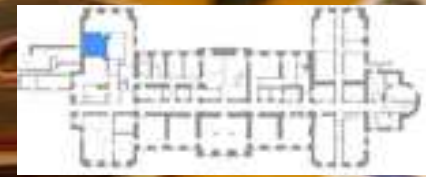
Customer Engineering, False Floor, Maintenance Device, 3174 Controller, 3268 Printer

IBM Hursley Museum



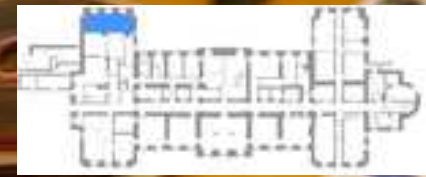
False Floor with Channel Cables

IBM Hursley Museum



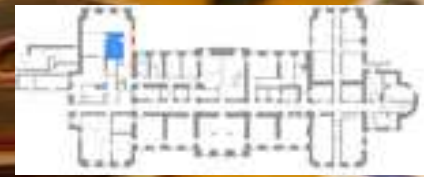
Customer Engineering – ALD Trolley, PC-XT, Laser Printer

IBM Hursley Museum



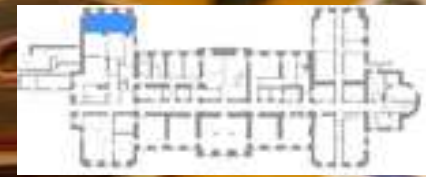
[ThinkPads](#)

IBM Hursley Museum



[Video Control Centre](#)

IBM Hursley Museum



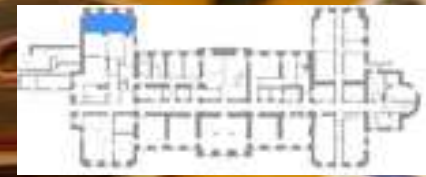
PC, PS/2, Monitors

IBM Hursley Museum



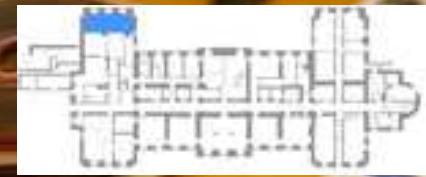
[PC, Hursley Site Model](#)

IBM Hursley Museum



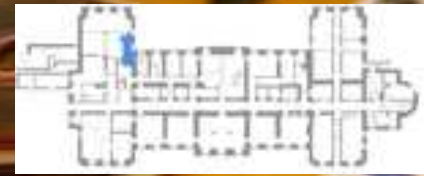
Home Computing, Servers

IBM Hursley Museum



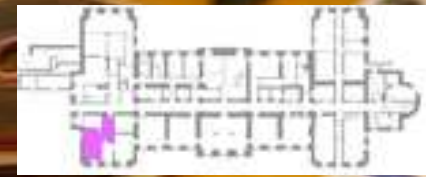
[PS/2, 5110, Home Computing, Servers](#)

IBM Hursley Museum



Portable Computing

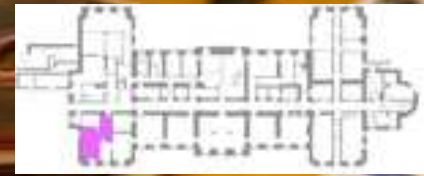
IBM Hursley Museum



AS/400, RS6000, Tape Library

Future Displays

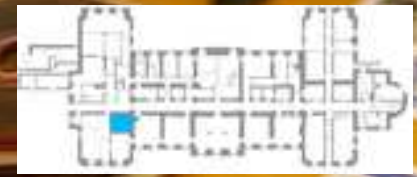
IBM Hursley Museum



[Rack, Sequent Rack](#)

[Future Displays](#)

IBM Hursley Museum



Newspapers, “Trash & Trinkets”

Back Office

Museum Web Site: <http://hursley.slx-online.biz>

IBM Hursley Museum

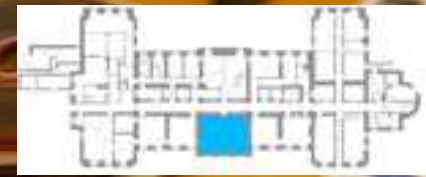


Paper Archives

Back Office

Museum Web Site: <http://hursley.slx-online.biz>

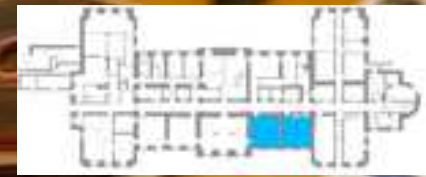
IBM Hursley Museum



Hardware Racks

Back Office

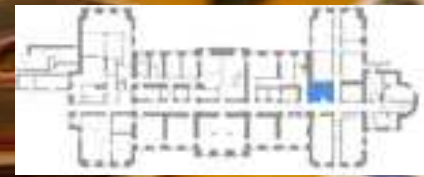
IBM Hursley Museum



[Video Tape Archive](#)

[Back Office](#)

IBM Hursley Museum



[Store Room](#)

[Back Office](#)